

Built-in 3-Way Diverter Valve Trim, for Modulo Valve

98734D / 98735D / 98737D

Product Description: Built-in 3-way diverter valve - Trim only

98734D-CP Aleo (1)
 98735D-CP Cuff (2)
 98737D-CP Strayt (3)

Required Item: 98699D-CP Modulo universal concealed box

Product Dimensions: 98734D-CP – W140 x H200 mm
 98735D-CP – Diameter 200 mm
 98737D-CP – W140 x H200 mm

Colour/Finish: Polished Chrome

Material: Brass Body

Minimum Pressure: 0.5 bar

Product Weight (kg): 98734D-CP – 1.75
 98735D-CP – 1.7
 98737D-CP – 1.9

Guarantee (Years): 5

Dimensions (mm): On following page

**Kohler UK**

Sales and Technical:

+44 (0) 844 571 0048 (Calls cost 7p per minute plus your phone company's access charge)

info@kohler.co.uk

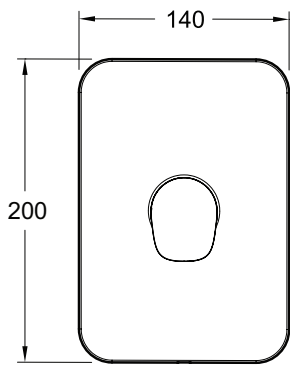
www.KOHLER.co.uk

THE BOLD LOOK
 OF **KOHLER**®

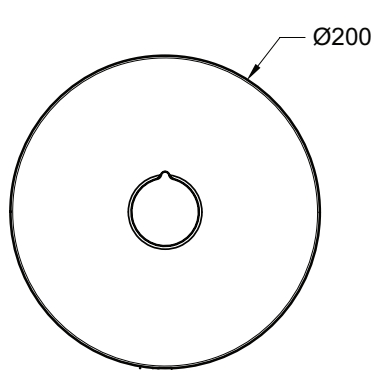
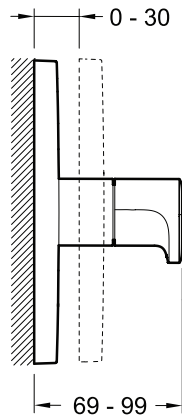
Built-in 3-Way Diverter Valve Trim, for Modulo Valve

98734D / 98735D / 98737D

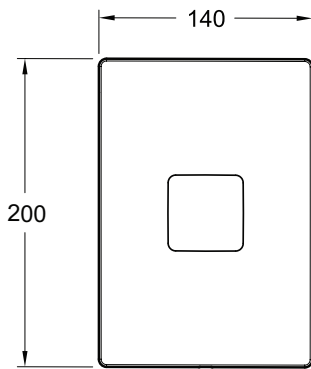
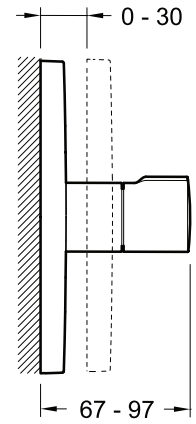
Dimensions (mm)



98734D-CP Aleo



98735D-CP Cuff



98737D-CP Strayt

